



improve your life

Air Conditioning Catalogue

[http:// www.argoclima.com](http://www.argoclima.com)

2011



AIR CONDITIONING CATALOGUE 2011

SINGLE UNIT PORTABLE AIR CONDITIONERS

Ultra	page	6-7
Optimo Black & White 9/11	page	8-9
Primo 8/10	page	10-11

SPLIT UNIT AND CONSOLE PORTABLE AIR CONDITIONERS

Twin 14 A	page	14-15
Ulisse 10 CLA / 10 HLA/ 13 PCLA	page	16-17

SPLIT AIR CONDITIONERS

Feelyin DCI mono	page	20-21
Feelyin On-Off mono	page	22-25
Feelyin On-Off dual	page	26-27
Juno On-Off mono	page	28-29
Juno DCI mono	page	30-31
Juno DCI dual	page	32-33
Reflexo DIY	page	34-35
Regulations on energy efficiency labeling	page	36



improve your life

SINGLE UNIT PORTABLE AIR CONDITIONERS

Ultra, Optimo, Primo

Argo single duct portables provide comfort straight away: ready to use, without the need for professional installation, in just a few minutes they are ready to cool and dehumidify; as they cool the air they remove the excess humidity, in this way they provide wellbeing even when the temperature is set just below actual room temperature.

INSTANT COMFORT

Argo single unit portable air conditioners are also suitable for very hot weather: they can operate in dehumidification mode only. They filter the air, provide ventilation and improve the quality of the air when humidity level is very high. This mode can be used to continuously drain condensation.

DEHUMIDIFIES
DURING MILD
WEATHER

Various solutions for installation: fixed installation (creating an opening in the glass and fitting the dedicated window kit) for maximum efficiency, or temporary installation, with no need to create an opening in the glass and with the hot air outflow pipe with dedicated reduction vent laid between the open windows. Useful swiveling wheels also allow you to easily move the air conditioner from one room to another according to your requirements.

EASY TO INSTALL,
EASY TO MOVE

The infrared remote control allows you to switch between the various functions available, based on the model: operating mode (cool, dehumidify, fan), fan speed, 24h timer, 1h timer, set temperature.

REMOTE CONTROL
OF ALL FUNCTIONS

The condensation that forms during the normal operation of the air conditioner is vaporised and expelled through the hot air outflow pipe. Part of the condensation is also reused to increase the efficiency of the device. This avoids continuous switching on/off due to the reservoir filling up, which can be particularly annoying at night.

VAPORISES
CONDENSATION



SINGLE DUCT PORTABLE MODELS



aluminum & white



ULTRA 12000 BTU/h

Beyond Class A

In anodised aluminium or white gloss finish

Scratch-proof satin finish white top

Three-way air distribution

Concealed wheels

6 Argo digital remote control

iFeel function

Only 41 dB(A)

Automatic condensate vaporisation
in cooling mode

Direct condensate discharge in
dehumidification mode



ULTRA



improve your life

This original design from Argo has three air outlets able to fill the room with cool air and has an elegant top without grilles, buttons or displays... You can leave it in the lounge all year round and place a vase of flowers or other decorative object on it while it cools or dehumidifies on request... Its technological core is quiet and clothed in anodised aluminium...

...ULTRA is part of the furniture!



Technical data

	Unit of measurement	ULTRA
Cooling capacity (35°C d.b.; 80% r.h.)	BTU/h	12,000
Cooling capacity ⁽¹⁾ (35°C d.b.; 24°C w.b.)	kW	3.30
Energy Label	ABCDEFG	A
E.E.R. (1) (35°C d.b.; 24°C w.b.)	(kW/kW)	2.68
Air flow rate (h.-m.-l.)	m ³ /h	300-290-270
Dehumidification	litres/h	1.3
Fan speed	N°	3
Sound pressure (h.-m.-l.)	dB(A)	45-43-41
Electrical power supply	V/F/Hz	230/1/50
Power input (1) (35°C d.b.; 24°C w.b.)	kW	1.23
Annual energy consumption in cooling mode (500h)-Dir. 2002/31/CE	kWh	615
Type of refrigerant		R410A
Window hole diameter	mm	135
Flexible exhaust tube diameter	mm	115
Flexible exhaust tube extended length	m	1
Net weight	Kg	40
Dimensions (H./W./D.)	mm	750x440x373

(1) Test conditions in accordance with EN14511

The technical data provided refers to European Standard EN14511 - Directive 2002/31/CE





white & black

OPTIMO 9/11000 BTU/h

Beyond Class A

Made in ABS

Digital control panel and LCD

Remote control

Automatic condensate vaporisation in cooling mode

Direct condensate discharge in dehumidification mode



OPTIMO

Youthful style in high gloss white or black, multi-functional and modern with a backlit display that completes the look...



...efficient and attractive!



Technical data

	Unit of measurement	Optimo 9	Optimo 11
Cooling capacity (35°C d.b.; 80% r.h.)	BTU/h	9,000	11,000
Cooling capacity ⁽¹⁾ (35°C d.b.; 24°C w.b.)	kW	2.55	3.10
Energy Label	ABCDEFG	A	A
E.E.R. ⁽¹⁾ (35°C d.b.; 24°C w.b.)	(kW/kW)	2.68	2.61
Air flow rate (h.-m.-l.)	m ³ /h	280-270-250	300-290-270
Dehumidification	litres/h	1.1	1.3
Fan speed	N°	3	3
Sound pressure (h.-m.-l.)	dB(A)	50-48-46	50-48-46
Electrical power supply	V/F/Hz	230/1/50	230/1/50
Power input ⁽¹⁾ (35°C d.b.; 24°C w.b.)	kW	0.95	1.19
Annual energy consumption in cooling mode (500h)-Dir. 2002/31/CE	kWh	475	595
Type of refrigerant		R410A	R410A
Window hole diameter	mm	135	135
Flexible exhaust tube diameter	mm	115	115
Flexible exhaust tube extended length	m	1	1
Net weight	Kg	30	31
Dimensions (H./W./D.)	mm	740x435x400	740x435x400

(1) Test conditions in accordance with EN4511

The technical data provided refers to European Standard EN14511 - Directive 2002/31/CE



PRIMO

8/10000 BTU/h

- Class A
- Made in ABS
- Digital control panel and LCD
- Remote control

- Automatic condensate vaporisation in cooling mode
- Direct condensate discharge in dehumidification mode



PRIMO

A new entry in the Argo range, Primo is a compact, youthful and technological portable unit; its attractive design complements your home and...



improve your life

...it provides refreshing cool air.



Technical data

	Unit of measurement	Primo 8	Primo 10
Cooling capacity (35°C d.b.; 80% r.h.)	BTU/h	8,000	10,000
Cooling capacity ⁽¹⁾ (35°C d.b.; 24°C w.b.)	kW	2.3	2.75
Energy Label	ABCDEFG	A	A
E.E.R. ⁽¹⁾ (35°C d.b.; 24°C w.b.)	(kW/kW)	2.67	2.62
Air flow rate (h.-m.-l.)	m ³ /h	270-260-240	290-280-260
Dehumidification	litres/h	1	1,2
Fan speed	N°	3	3
Sound pressure (h.-m.-l.)	dB(A)	50-48-46	50-48-46
Electrical power supply	V/F/Hz	230/1/50	230/1/50
Power input ⁽¹⁾ (35°C d.b.; 24°C w.b.)	kW	0.86	1.05
Annual energy consumption in cooling mode (500h)-Dir. 2002/31/CE	kWh	430	525
Type of refrigerant		R410A	R410A
Window hole diameter	mm	135	135
Flexible exhaust tube diameter	mm	115	115
Flexible exhaust tube extended length	m	1	1
Net weight	Kg	29	30
Dimensions (H./W./D.)	mm	746x460x384	746x460x384

(1) Test conditions accordance with EN4511

The technical data provided refers to European Standard EN14511 - Directive 2002/31/CE





SPLIT AND CONSOLE PORTABLE AIR CONDITIONERS

Ulisse, Twin

Argo split portable units are made up of two parts, the device to be positioned in the room to be cooled and the very small "outdoor unit" to be positioned outside, on a balcony or window sill or attached to the wall using the dedicated metal container provided with the machine.

INSTANT COMFORT

The digital remote control provides control of all the functions: programmable 24h timer, night set back, activation of the air conditioner, dehumidifier, or three-speed fan only, digital temperature adjustment and room temperature control via dedicated built-in sensor.

REMOTE CONTROL
OF ALL FUNCTIONS

Thanks to the quick connection (AeroQuip), installation is simple and doesn't require special tools; the device is also very flexible because when the dedicated extensions are used the two parts can be positioned up to 6 metres apart.

AEROQUIP
ATTACHMENTS FOR
DO-IT-YOURSELF
INSTALLATION

The condensation is automatically vaporised in the outdoor unit, except in the Ulisse version with heat pump.

VAPORISATION OF
CONDENSATION
VIA OUTSIDE UNIT

Very high levels of capacity can be achieved with this type of portable unit (up to 14000 BTU/h). These products can easily be taken with you when moving house thanks to the easy attachment/detachment of the connection and the possibility of hanging the outdoor unit using a dedicated hook.

EASY COMFORT
EVEN FOR LARGE
ROOMS



SPLIT AND CONSOLE PORTABLES



TWIN 14A 14000 BTU/h

Class A

Argo digital remote control

Quiet, only 39 dB(A)

iFeel

Outside condenser

Automatic condensate vaporisation

AeroQuip connections for easy installation

I.U./O.U. connection pipe up to 6 metres (preloaded extensions)

Accessories for installing outdoor unit provided



TWIN

TWIN 14A

A new look for the split portable air conditioner with an outdoor condenser unit connected via quick connectors; this unit is very convenient with no air pipe and can also be installed in a fixed position, like a normal split unit.

Able to cool up to 14000 BTU/h

...very easy to install.



Technical data

	Unit of measurement	Twin 14 A
Cooling capacity	kW	4.01
	BTU/h	13,670
	kcal/h	3,450
Energy Label	ABCDEFG	A
E.E.R.	(kW/kW)	3.21
Air flow rate (h.-l.)	m ³ /h	460-370
Dehumidification	litres/h	1.6
Fan speed (I.U. / O.U.)	N°	3 + Auto / 1
Sound pressure I.U. (h.m.l.)	dB(A)	40-39-39
Sound pressure O.U. (h)	dB(A)	41
Electrical power supply	V/Ph/Hz	230/1/50
Power input	kW	1.250
Annual energy consumption in cooling mode (500h)-Dir. 2002/31/CE	kWh	625
Type of refrigerant		R410A
Standard pipe length	m	2
Additional pipe length	m	2-4
Maximum height difference between units (outdoor unit above)	m	1.2
Maximum height difference between units (outdoor unit below)	m	5.2
Net weight I.U. / O.U.	Kg	41/10,5
Net dimensions I.U. (H./W./D.)	mm	800x470x310
Net dimensions O.U. (H./W./D.)	mm	509x525x250

The technical data provided refers to European Standard EN14511 - Directive 2002/31/CE



ULISSE 10/13000 BTU/h

Class A for all 3 models
Very quiet, only 29 dB(A)
Argo digital remote control
Outside condenser

Automatic condensate vaporisation
(except HLA version)
AeroQuip connections for easy
installation

I.U./O.U. connection pipe up to 6
metres
Accessories for installing outdoor unit
provided

ULISSE



improve your life

Incredible capacity and functionality in only 24 cm of depth! All this and more is offered by the Ulisse Argo; extremely quiet, efficient and practical thanks also to the multi-functional digital remote control equipped with a 24 hour timer... Program it then forget about it!
Ulisse Cools, Heats and Dehumidifies... it is extremely quiet and takes up little space!

...an irreplaceable product.

Technical data

	Unit of measurement	Ulisse 10 CLA		Ulisse 10 HLA		Ulisse 13 PCLA
		COOLING	COOLING	HEATING	COOLING	
Capacity	kW	2.98	2.98	3.34	4.00	
	BTU/h	10,160	10,160	11,390	13,640	
	kcal/h	2,560	2,560	2,870	3,440	
Energy Label	ABCDEFG	A	A	A	A	
E.E.R.	(kW/kW)	3.22	3.22	3.67	3.21	
Air flow rate (h.)/(h.m.l.)	m ³ /h	370	370		400-375-335	
Dehumidification	litres/h	1.2	1.2		1.9	
Fan speed (I.U. / O.U.)	N°	3 + Auto / 1	3 + Auto / 1		3 + Auto / 1	
Sound pressure I.U. (h.m.l.)	dB(A)	36-36-34	35-31-29		37-36-34	
Sound pressure O.U. (h)	dB(A)	45	39		42	
Electrical power supply	V/Ph/Hz	230/1/50	230/1/50		230/1/50	
Power input	kW	0.925	0.925		1.25	
Annual energy consumption in cooling mode - Dir. 2002/31/CE	kWh	463	463		625	
Type of refrigerant		R410A	R410A		R410A	
Standard pipe length	m	2	2		2	
Additional pipe length	m	2-4	2-4		2-4	
Maximum height difference between units (outdoor unit above)	m	1.2	1.2		1.2	
Maximum height difference between units (outdoor unit below)	m	5.2	5.2		5.2	
Net weight I.U. / O.U.	Kg	44/9.5	44/15		44/15	
Net dimensions I.U. (H./W./D.)	mm	790x580x245	790x580x245		790x580x245	
Net dimensions O.U. (H./W./D.)	mm	490x525x250	490x525x250		490x525x250	



version
HLA

The technical data provided refers to European Standard EN14511 - Directive 2002/31/CE



improve your life

FIXED AIR CONDITIONERS

Feelyin, Juno, Reflexo

ON/OFF is the most simple technology used for an air conditioner to operate in two modes: on or off. In ON mode the compressor works at full capacity to reach the set temperature. It then stops and restarts only when the difference between the room temperature and set temperature reaches around 2 degrees.

ON-OFF
TECHNOLOGY

The infrared digital remote control provides control of all the functions: operating mode selection (cooling, heating, dehumidification only, fan only at three or four speeds, 1h and 24h timer, digital temperature adjustment and sleep function with 3 or 4 different programs...)

MULTI-
FUNCTIONAL
DIGITAL REMOTE
CONTROL

DC INVERTER technology is also called modulating technology because it uses a special electronic device to modulate the capacity of the compressor (in the most sophisticated cases also the fan motors are modulated), so as to optimise energy consumption as the set temperature point is gradually reached: maximum comfort, constant operation and with low energy consumption!

DC INVERTER
TECHNOLOGY

The split indoor units are all equipped with dedicated filters on the air intake, from simple dust and mould filters to active carbon filters and photocatalytic filters, based on the model. The aim of these filters is to purify the air before it is released back into the room after having been climate controlled.

AIR QUALITY

Carefully selected materials with high sound absorption properties, isolation of strategic components such as the compressors and electric motors and the use of high efficiency components with low noise and electromagnetic output, all contribute to making our units as quiet as possible. The quietest of all are of course the DCI models, thanks to current modulation.

EXTREMELY
QUIET

The flaps on the wall-mounted units, with a wide opening range, can automatically control the direction of the air flow or can be positioned in one of the many possible fixed positions.

WIDE RANGE
OF AIR FLOW
ADJUSTMENTS



ON-OFF & DCI SPLIT UNITS



9/12000 BTU/h
FEELYIN DCI

DC Inverter technology
Class AA
Quiet, only 32 dB(A)
Digital remote control
Active carbon filter

Photocatalytic BioFilter
Elegant design made in ABS
Turbo function
Auto-Restart after a black out
Sleep function (4 programmes)




FEELYIN
INVERTER



improve your life

FEELYIN^{DCI}

DC Inverter technology, performance and automatic functions that simplify use as well as guaranteeing the best temperature conditions for maximum comfort.

...not to mention its incredible quietness

...maximum performance, minimum energy consumption.



Technical data

	Unit of measurement	Feelyin 9 DCI		Feelyin 12 DCI	
		COOLING	HEATING	COOLING	HEATING
Nominal Capacity (Min. - Max.)	kW	2.50 (1.2-4.0)	2.90 (1.4-5.0)	3.20 (1.30-4.10)	3.80 (1.50-5.10)
	BTU/h	8,550 (4,100-13,650)	9,900 (4.8-17,100)	10,920 (4,440-14,000)	13,000 (5,120-17,400)
	kcal/h	2,150 (1,032-3,440)	2,500 (1,204-4,300)	2,752 (1,118-3,530)	3,270 (1,290-4,390)
Energy Class	ABCDEFGFG	A	A	A	A
E.E.R.	(kW/kW)	3.29 (4.4-2.9)	3.63 (4.7-3.1)	3.23 (2.9-4.1)	3.62 (3.0-4.4)
Air flow rate (h.m.l.)	m ³ /h	450-400-320		500-450-380	
Dehumidification	l/h	0.8		1.2	
Fan speed (I.U. / O.U.)	N°	3/1		3/1	
Sound pressure I.U. (h.-m.-l.)	dB(A)	38-35-32		40-37-34	
Sound pressure O.U. (high speed)	dB(A)	50		51	
Electrical power supply	V/Ph/Hz	230/1/50		230/1/50	
Power input	kW	0.76 (0.27-1.36)	0.8 (0.3-1.6)	0.99 (0.34-1.43)	1.05 (0.35-1.70)
Annual energy consumption in cooling mode (500h)-Dir. 2002/31/CE	kWh	380 (135-680)	-	495(170-715)	-
Compressor type		Rotary		Rotary	
Type of refrigerant		R410A		R410A	
Liquid pipe diameter	mm (inch")	6.35 (1/4")		6.35 (1/4")	
Gas pipe diameter	mm (inch")	9.52 (3/8")		12.7 (1/2")	
Pipe lenght with standard charge	m	7		7	
Maximum pipe length	m	10		10	
Maximum height difference (outdoor unit above)	m	5		5	
Maximum height difference (indoor unit above)	m	5		5	
Net dimensions I.U. (H./W./D.)	mm	290x800x186		290x800x186	
Net dimensions O.U. (H./W./D.)	mm	520x770x280		520x770x280	
Net weight I.U. / O.U.	Kg	10/32		10/37	

The technical data provided refers to European Standard EN14511 - Directive 2002/31/CE





9/12000 BTU/h
FEELYIN ON-OFF

Optimised on/off standard technology
Class A
Quiet, only 34 dB(A)
Digital remote control
Active carbon filter

Photocatalytic BioFilter
Elegant design made in ABS
Turbo function
Auto-Restart after a black out
Sleep function (4 programmes)



FEELYIN



FEELYIN ON-OFF



White, good looking and modern... Easy to program, reliable, complete with everything you need for your comfort; Feelyin is one of those air conditioners that works so well that it becomes part of the daily routine...

...simply reliable!

Technical data

	Unit of measurement	Feelyin 9		Feelyin 12	
		COOLING	HEATING	COOLING	HEATING
Capacity	kW	2.7	2.85	3.5	3.8
	BTU/h	9200	9720	12000	12960
	kcal/h	2300	2450	3010	3270
Energy Label	ABCDEFGF	A	A	A	B
E.E.R.	(kW/kW)	3.25	3.61	3.33	3.42
Air flow rate (h.m.l.)	m ³ /h	450-400-320		500-450-380	
Dehumidification	l/h	0.8		1.2	
Fan speed (I.U. / O.U.)	N°	3/1		3/1	
Sound pressure I.U. (h.-m.-l.)	dB(A)	40-37-34		40-37-34	
Sound pressure O.U. (high speed)	dB(A)	50		51	
Electrical power supply	V/Ph/Hz	230/1/50		230/1/50	
Power input	kW	0.83	0.79	1.05	1.11
Annual energy consumption in cooling mode (500h)-Dir. 2002/31/CE	kWh	415	-	525	-
Compressor type		Rotary		Rotary	
Type of refrigerant		R410A		R410A	
Liquid pipe diameter	mm (inch")	6.35 (1/4")		6.35 (1/4")	
Gas pipe diameter	mm (inch")	9.52 (3/8")		12.7 (1/2")	
Pipe lenght with standard charge	m	7		7	
Maximum pipe length	m	10		10	
Maximum height difference (outdoor unit above)	m	5		5	
Maximum height difference (indoor unit above)	m	5		5	
Net dimensions I.U. (H./W./D.)	mm	290x800x186		290x800x186	
Net dimensions O.U. (H./W./D.)	mm	500x665x295		552x835x310	
Net weight I.U. / O.U.	Kg	10/26		10/37	

The technical data provided refers to European Standard EN14511 - Directive 2002/31/CE





18/24000 BTU/h

FEELYIN ON-OFF

- Optimised on/off standard technology
- Class A
- Quiet, 37dB(A)
- Digital remote control
- Active carbon filter

- Photocatalytic BioFilter
- Elegant design made in ABS
- Turbo function
- Auto-Restart after a black out
- Sleep function (4 programmes)



860/1080 mm

293/330 mm



203/220 mm

FEELYIN ON-OFF

Big power for the climate control of big rooms... All combined with a modern design, maximum ease of use and incredible quietness...



...big power for big rooms.

Technical data

	Unit of measurement	Feelyin 18		Feelyin 24	
		COOLING	HEATING	COOLING	HEATING
Capacity	kW	5.20	6.00	7.10	7.80
	BTU/h	17,750	20,500	24,250	26,650
	kcal/h	4,470	5,160	6,100	6,700
Energy Label	ABCDEFG	A	A	A	B
E.E.R.	(kW/kW)	3.22	3.64	3.23	3.53
Air flow rate (h.m.l.)	m ³ /h	850-700-650		1100-980-880	
Dehumidification	l/h	2.2		3	
Fan speed (I.U. / O.U.)	N°	3/1		3/1	
Sound pressure I.U. (h.-m.-l.)	dB(A)	43-40-37		50-46-43	
Sound pressure O.U. (high speed)	dB(A)	56		58	
Electrical power supply	V/Ph/Hz	230/1/50		230/1/50	
Power input	kW	1.615	1.65	2.2	2.21
Annual energy consumption in cooling mode (500h)-Dir. 2002/31/CE	kWh	807.5	-	1,100	-
Compressor type		Rotary		Rotary	
Type of refrigerant		R410A		R410A	
Liquid pipe diameter	mm (inch")	6.35 (1/4")		9.52 (3/8")	
Gas pipe diameter	mm (inch")	12.7 (1/2")		15.88 (5/8")	
Pipe lenght with standard charge	m	7		7	
Maximum pipe length	m	10		15	
Maximum height difference (outdoor unit above)	m	5		8	
Maximum height difference (indoor unit above)	m	5		8	
Net dimensions I.U. (H./W./D.)	mm	293x860x203		330x1080x220	
Net dimensions O.U. (H./W./D.)	mm	680x845x310		680x845x310	
Net weight I.U. / O.U.	Kg	12/50		15/60	

The technical data provided refers to European Standard EN14511 - Directive 2002/31/CE





9000+9000/9000+12000/12000+12000 BTU/h

FEELYIN DUAL

Optimised on/off standard technology
Quiet, only 34 dB(A)
Digital remote control
Active carbon filter
Photocatalytic BioFilter

Elegant design made in ABS
Turbo function
Auto-Restart after a black out
Sleep function (4 programmes)





FEELYIN DUAL



Considerable power combined with a wide range of functions distinguish this incredibly simple Dual Split unit...

...install it and forget about it!

Technical data

	Unit of measurement	Feelyin 9+9		Feelyin 9+12		Feelyin 12+12	
		COOLING	HEATING	COOLING	HEATING	COOLING	HEATING
Capacity	kW	2.7+2.7	2.91+2.91	2.7+3.52	2.91+3.7	3.45+3.45	3.6+3.6
	BTU/h	9,220+9,220	9,930+9,930	9,220+12,000	9,930+12,630	11,770+11,770	12,290+12,290
	kcal/h	2,322+2,322	2,500+2,500	2,322+3,030	2,500+3,182	2,970+2,970	3,096+3,096
Energy Label	ABCDEFG	A	B	B	D	C	D
E.E.R. / C.O.P.	(kW/kW)	3.21	3.42	3.02	2.87	2.82	2.82
Air flow rate I.U. (h.-m.-l.)	m ³ /h	450-400-320		450-400-320/500-450-380		500-450-380	
Dehumidification	l/h	0.8		0.8 / 1.2		1.2	
Fan speed (I.U. / O.U.)	N°	3 + Auto / 1		3 + Auto / 1		3 + Auto / 1	
Sound pressure I.U. (h-m-l)	dB(A)	38-35-32		38-35-32 / 40-37-34		40-37-34	
Sound pressure O.U. (h.)	dB(A)	57		58		59	
Electrical power supply	V/Ph/Hz	230/1/50		230/1/50		230/1/50	
Power input	kW	0.84+0.84	0.85+0.85	0.84+1.22	0.85+1.45	1.225+1.225	1.275+1.275
Annual energy consumption in cooling mode (500h)-Dir. 2002/31/CE	kWh	840	-	1,030	-	1,225	-
Compressor type		Rotary		Rotary		Rotary	
Type of refrigerant		R410A		R410A		R410A	
Liquid pipe diameter	mm (inch")	6.35 (1/4") / 6.35 (1/4")		6.35 (1/4") / 6.35 (1/4")		6.35 (1/4") / 6.35(1/4")	
Gas pipe diameter	mm (inch")	9.52 (3/8") / 9.52 (3/8")		9.52 (3/8") / 12.7 (1/2")		12.7 (1/2") / 12.7 (1/2")	
Pipe length with standard charge	m	10		10		15	
Maximum height difference (outdoor unit above)	m	5		5		7	
Maximum height difference (indoor unit above)	m	5		5		7	
Net dimensions I.U. (H./W./D.)	mm	290x800x186		290x800x186		290x800x186	
Net dimensions O.U. (H./W./D.)	mm	680x813x310		680x813x310		680x813x310	
Net weight I.U. / O.U.	Kg	10 / 56		10 / 56		10 / 62	

The technical data provided refers to European Standard EN14511 - Directive 2002/31/CE





9/12000 BTU/h

JUNO ON/OFF

Optimised on/off standard technology
Class AA
Digital remote control and LED display
Compact design
Only 32 dB(A) of sound pressure
4 fan speeds
Turbo function
Memory function

Sleep mode (auto or customised)
Autoclean indoor unit heat exchanger
Intelligent defrost and cold air prevention during heating
Soft Start: low power input on start up, does not impact on the use of other electrical devices.





174/177 mm

JUNO ON/OFF

Juno, a new line of air conditioners with an attractive and modern design, with a special air diffusion system and LED display that makes it discreetly modern... User friendly.



Wellbeing night and day!

Technical data

	Unit of measurement	JUNO 09		JUNO 12	
		COOLING	HEATING	COOLING	HEATING
Capacity	kW	2.64	2.81	3.22	3.52
	BTU/h	9000	9600	10980	12000
	kcal/h	2276	2420	2780	3034
Energy Label	ABCDEFGF	A	A	A	A
E.E.R. / C.O.P.	(kW/kW)	3.21	3.61	3.21	3.61
Air flow rate I.U. (tu.-h.-m.-l.)	m³/h	400-350-310-280		550-500-420-350	
Dehumidification	l/h	0.8		1.2	
Fan speed (I.U. / O.U.)	N°	4/1		4/1	
Sound pressure I.U. (tu.-h.-m.-l.)	dB(A)	40-37-35-32		41-38-35-32	
Sound pressure O.U. (high speed)	dB(A)	50		52	
Electrical power supply	V/Ph/Hz	230/1/50		230/1/50	
Power input	kW	0.82	0.78	1.00	0.97
Annual energy consumption in cooling mode (500h)-Dir. 2002/31/CE	kWh	410	-	500	-
Compressor type		Rotary		Rotary	
Type of refrigerant		R410A		R410A	
Liquid pipe diameter	mm (inch")	6.35 (1/4")		6.35 (1/4")	
Gas pipe diameter	mm (inch")	9.52 (3/8")		12.7 (1/2")	
Pipe length with standard charge	m	5		5	
Maximum pipe length	m	15		20	
Maximum height difference (outdoor unit above)	m	10		10	
Maximum height difference (indoor unit above)	m	10		10	
Net dimensions I.U. (H./W./D.)	mm	255x730x174		265x790x177	
Net dimensions O.U. (H./W./D.)	mm	540x776x320		540x776x320	
Net weight I.U. / O.U.	Kg	8/31		9/31	



The technical data provided refers to European Standard EN14511 - Directive 2002/31/CE



9/12000 BTU/h
JUNO DCI

- DC Inverter technology
- Class AA
- Digital remote control and LED display
- Compact design
- Only 32 dB(A) of sound pressure
- Wide range of air flow settings
- 4 fan speeds
- Turbo function
- Memory function

- Sleep mode (auto or customised)
- Autoclean indoor unit heat exchanger
- Intelligent defrost and cold air prevention during heating
- Soft Start: low power input on start up, does not impact on the use of other electrical devices.





JUNO DCI



Juno is also available in a DC inverter version, to provide even better performance and instant and continued comfort with extremely low energy consumption; in addition, certain technological refinements aim to reduce power consumption at start-up and improve operation at low temperatures; all very quietly...

Technology means comfort!

Technical data

	Unit of measurement	JUNO 9 DCI		JUNO 12 DCI	
		COOLING	HEATING	COOLING	HEATING
Capacity nominal (min.-max.)	kW	2,50(0,5-3,2)	2,80(0,8-3,6)	3,50 (0.51-3.90)	3,90 (0.88-4.40)
	BTU/h	8530 (1710-10910)	9550 (2730-12280)	11950 (1740-13300)	13300 (3000-15000)
	kcal/h	2160 (430-2760)	2410 (690-3100)	3017 (440-3360)	3360 (760-3800)
Energy Label	ABCDEFGF	A	A	A	A
E.E.R. / C.O.P.	(kW/kW)	3,24	3,61	3.24	3.61
Air flow rate I.U. (hh.-h.-m.-l.)	m ³ /h	550-500-400-300		600-500-400-300	
Dehumidification	l/h	0,8		1.4	
Fan speed (I.U. / O.U.)	N°	4/1		4/1	
Sound pressure I.U. (hh.-h.-m.-l.)	dB(A)	40-37-35-32		42-39-36-33	
Sound pressure O.U. (high speed)	dB(A)	50		52	
Electrical power supply	V/Ph/Hz	230/1/50		230/1/50	
Power input	kW	0,77 (0,25-1,36)	0,775 (0,2-1,38)	1.08 (0.23-1.30)	1.08 (0.25-1.45)
Annual energy consumption in cooling mode (500h)-Dir. 2002/31/CE	kWh	385 (125-680)	-	540 (115-650)	-
Compressor type		Rotary DC Inverter		Rotary	
Type of refrigerant		R410A		R410A	
Liquid pipe diameter	mm (inch")	6,35(1/4")		6.35 (1/4")	
Gas pipe diameter	mm (inch")	9,52(3/8")		9.52 (3/8")	
Pipe lenght with standard charge	m	5		5	
Maximum pipe length	m	15		20	
Maximum height difference (outdoor unit above)	m	10		10	
Maximum height difference (indoor unit above)	m	10		10	
Net dimensions I.U. (H./W./D.)	mm	265x790x170		275x845x180	
Net dimensions O.U. (H./W./D.)	mm	540x776x320		540x776x320	
Net weight I.U. / O.U.	Kg	9/27		11/29	



The technical data provided refers to European Standard EN14511 - Directive 2002/31/CE



9000+9000/9000+12000 BTU/h
JUNO DCI DUAL

DC Inverter technology

Class AA

Only 1 watt of power consumption in stand-by

Digital remote control and LED display

Compact design

Only 32 dB(A) of sound pressure

Wide range of air flow settings

4 fan speeds

Turbo function

Memory function

Sleep mode (auto or customised)

Autoclean indoor unit heat exchanger

Intelligent defrost and cold air prevention during heating

Soft Start: low power input on start up, does not impact on the use of other electrical devices.



JUNO 
INVERTER



improve your life

JUNO DCI DUAL

A single outdoor unit is enough to control the climate in 2 rooms, small or large it doesn't matter... With the performance, efficiency and quietness that only DC Inverter technology can provide.



Less bulk and less energy consumption!

Technical data i.u.

	UOM	JUNO DCI 9 IU D		JUNO DCI 12 IU D	
		COOLING	HEATING	COOLING	HEATING
Capacity	kW	2.60	2.80	3.5	3.8
Air flow rate	m³/h	500		630	
Fan speed	N°	4		4	
Sound pressure (hh.-h.-m.-l.)	dB(A)	37-34-31-28		38-34-32-30	
Liquid pipe diameter	mm (inch")	6.35 (1/4")		6.35 (1/4")	
Gas pipe diameter	mm (inch")	9.52 (3/8")		9.52 (3/8")	
Net dimensions (H./W./D.)	mm	265x790x170		275x845x180	
Net weight	Kg	9		10	

4 indoor unit matchings

	1 unit	JUNO DCI 09 UI D
		JUNO DCI 12 UI D
	2 units	JUNO DCI 09 UI D X 2
		JUNO DCI 09 UI D + JUNO DCI 12 UI D



Technical data

	Unit of measurement	JUNO DCI OU D	
		COOLING	HEATING
Indoor units operating simultaneously	N°	2	
Capacity - nominal (min-max)	kW	5.0 (2.05-6.2)	5.6 (2.5-6.65)
	BTU/h	17000 (7000-21150)	19100 (8600-22700)
Energy Label	ABCDEFGF	A	
E.E.R. / C.O.P.	(kW/kW)	3.23	
O.U. air flow rate	m³/h	2600-2300-1600	
O.U. fan speed	N°	3	
Sound pressure O.U. (h.-m.-l.)	dB(A)	56-53-50	
Electrical power supply	V/Ph/Hz	230/1/50	
Power input - nominal (min-max)	kW	1.55 (0.5-2.55)	
Annual energy consumption in cooling mode - Dir. 2002/31/CE	kWh	775 (250-1275)	
Compressor type		Twin Rotary (DC inverter)	
Type of refrigerant		R410A	
Liquid pipe diameter	mm (")	6.35 (1/4")	
Gas pipe diameter	mm (")	9.52 (3/8")	
Maximum length of pipes per unit	m	10	
Maximum total length of pipes	m	20	
Pipe length with standard charge - total	m	10 (5+5)	
Maximum height difference (outdoor unit above)	m	5	
Maximum height difference (indoor unit above)	m	5	
Net weight O.U.	Kg	43	
Net dimensions O.U. (H./W./D.)	mm	596x899x378	

The technical data provided refers to European Standard EN14511, as per Directive 2002/31/CE



9/12000 BTU/h REFLEXO DIY

Full DC Inverter 180° technology
Class AA

Easy installation thanks to special quick connections on both the indoor and outdoor units.

Kit with pipes and electrical connections

Refrigerant pipe up to 5 metres preloaded

Extremely quiet, only 23 dB(A)

Non Stop under -15°C outside

Defrost without heating interruption



REFLEXO DIY



improve your life

Power and technology combined with an extremely elegant design and satin metal finish make Reflexo an essential part of modern environments in which even the smallest details are examined and designed, for those who want only the best for their home...

...pure "made in Italy" style.

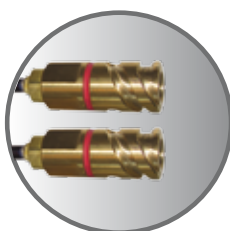


Technical data

	Unit of measurement	Reflexo 9 DIY-DCI		Reflexo 12 DIY-DCI	
		COOLING	HEATING	COOLING	HEATING
Capacity - nominal (min-max)	kW	2.85 (1.05-3.15)	3.24 (1.15-4.0)	3.25 (1.1-3.7)	3.40 (1.25-4.65)
	BTU/h	9,730 (3,580-10,750)	11,060 (3,930-13,650)	11,100 (3,760-12,630)	11,600 (4,270-15,870)
Energy Label	ABCDEFGF	A	A	A	A
E.E.R. / C.O.P. nominal (min.-max.)	(kW/kW)	3.65 (4.57-2.86)	4.10 (5.48-3.20)	3.32 (4.4-2.78)	3.82 (5.21-3.0)
Air flow rate I.U. (h.-m.-l.)	m³/h	450-400-370		470-430-390	
Dehumidification	l/h	1.2	-	1.5	-
Fan speed (I.U. / O.U.)	N°	4/auto		4/auto	
Sound pressure I.U. (h.-m.-l.-l..)	dB(A)	39-36-29-23		39-36-29-23	
Sound pressure O.U. (max.)	dB(A)	37		40	
Electrical power supply	V/Ph/Hz	230/1/50		230/1/50	
Power input nominal (min-max)	kW	0.78 (0.23-1.1)	0.79 (0.21-1.25)	0.98 (0.25-1.33)	0.89 (0.24-1.55)
Annual energy consumption in cooling mode (500h)-Dir. 2002/31/CE	kWh	390	-	490	-
Compressor type		Rotary		Rotary	
Type of refrigerant		R410A		R410A	
Liquid pipe diameter	mm (inch")	6.35 (1/4")		6.35 (1/4")	
Gas pipe diameter	mm (inch")	9.52 (3/8")		9.52 (3/8")	
Refrigerant and electrical connections Kit	m	3 / 5		3 / 5	
Net weight I.U. / O.U.	mm	8/35		8/35	
Net dimensions I.U. (H./W./D.)	mm	270x805x205		270x805x205	
Net dimensions O.U. (H./W./D.)	Kg	540x700x265		540x700x265	



QUICK CONNECTIONS
FOR EASY
INSTALLATION



The technical data provided refers to European Standard EN14511 - Directive 2002/31/CE

Regulations on energy efficiency labeling

Argo air conditioners are compliant with the most recent European Standards for the reduction of energy consumption and atmospheric pollution.

The labels that indicate the energy efficiency class were introduced with European Community directive 2002/31/CE, which makes reference to standard EN14511, which in turn provides precise reference tables for the energy efficiency class classification.

Energy efficiency labels are applied to products (air conditioners with a cooling power of up to 12 kW) on display at retail outlets. They are provided to inform customers of the efficiency of the product they intend to purchase. The label is divided into two parts, a generic coloured label and an adhesive black and white label that must be applied over the coloured one.

Our company provides both the labels mentioned above. The generic label is supplied directly at retail outlets, whilst the specific one is placed inside the packaging of each air conditioner sold.

In the event that the specific label has been lost, each retail outlet should be able to provide another immediately by downloading it from the Internet or requesting it from our marketing dept.

The energy efficiency label indicates the energy class; class A is the highest and is awarded based on tables that compare thermal efficiency and energy consumption.

The indicators of the above ratio are known as:

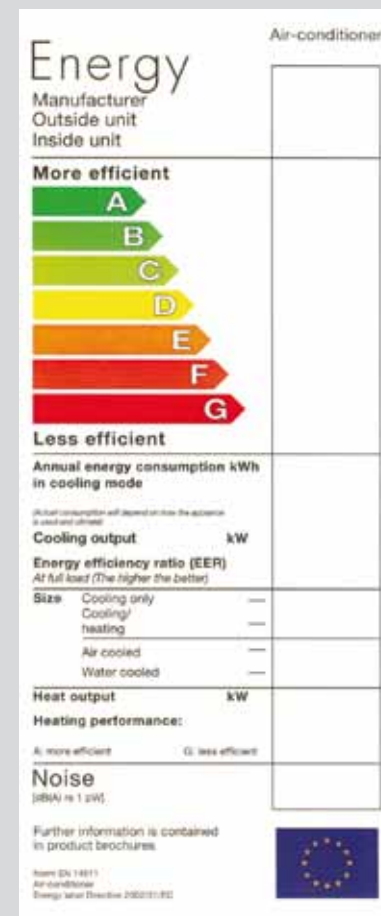
E.E.R. = energy efficiency ratio: this is the ratio between cooling power (in kw) and power consumption in cooling mode (in kw)

C.O.P. = coefficient of performance: this is the ratio between heating power (in kw) and power consumption in heating mode (in kw)

Example of an energy efficiency label:

1) generic - coloured

2) specific - black/white





improve your life

argoclima s.p.a.

Head office

Via Varese, 90

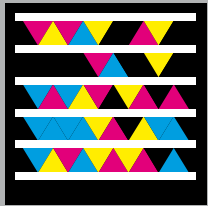
21013 Gallarate (VA) ITALY

Tel: +39 0331 755111

Fax: +39 0331 776240

www.argoclima.com

 <http://gettag.mobi>



QR CODE



www.argoclima.com

N.B. The manufacturer assumes no responsibility for any errors or inaccuracies in the content of this catalogue, and reserves the right to make any necessary changes to its products, at any time and without notice, for technical or commercial reasons.